



Software Update Instructions

1. For Software Updates, first make a backup under System/Setup in the DataBase program. Do not try to restore this backup into the upgraded software. The original software must be reloaded before this backup can be restored. This is just a precautionary measure.
2. Next, the program must be exited on all PCs including the Comm Server.
3. If this system is using a Dedicated File Server the software must be un-installed and re-installed on the File Server first. If the system is configured to use the Comm Server as the Shared DataBase resource then this PC should be the first one updated. Once the File Server has been updated the Comm Server is updated next followed by all other Workstations.

Un-Installing WinDSX

4. To un-install WinDSX select "Add/Remove Programs" from "Control Panel". Select "WinDSX" and then click on "Remove". When un-installing Version 3.1 and lower you will be prompted to "Remove Shared Files?". Select "Remove All" if you are going to re-install WinDSX. If WinDSX is not to be re-installed select "Remove None". When the un-install program states that certain *.zip, and *.mdb files cannot be removed because they no longer exist just click on OK and continue. This is normal when un-installing all versions below 3.5 and nothing to be concerned about. When the program is removed the directory and the database will still be intact and in the same location on the hard disk.

Updating the Windows Service Pack

5. Service Pack 6a is required for Windows NT™ and Service Pack 2 for Windows 2000™. Using a Service Pack other than required may or may not produce desired results. Windows 2000 Service Pack 3 will only work with WinDSX Software 3.5 and higher. Some Service Packs are located on the WinDSX CD in the Utilities folder. See the PC requirements page for more details concerning Operating Systems, Service Packs, and Software Versions.

Re-installing WinDSX

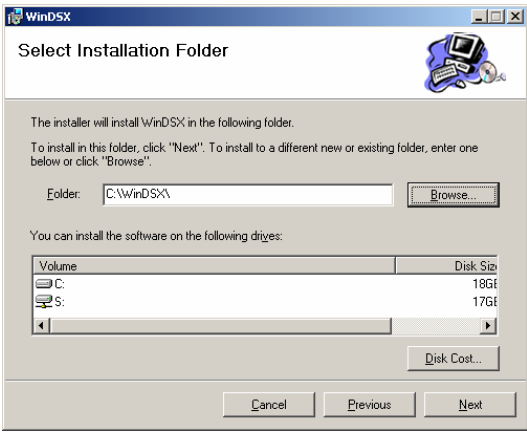
6. Once the software is un-installed it is ready to be re-installed. To load the software, place the WinDSX CD in the CD-ROM Drive. Select "My Computer" on the desktop then right click on the CD-ROM Drive and select explore. Navigate to the Install Directory. Open the Install### Directory and double click on Setup.exe. Follow the prompts and allow setup to install into the C:\WinDSX\ directory for new systems, or click on browse and change to the directory where the software was previously installed.
7. When the software is loaded use Explorer to locate and run the DB.EXE program located in the same directory the software was just installed. Once the DB.EXE program is finished updating the database it will leave you on the DataBase Login Screen. Select Cancel to Exit.
8. Repeat steps 4 - 7 for the Comm Server and all Workstations that run the WinDSX software. When running Database (DB.exe) on the Comm Server for the first time the system will update the Access Levels. If "Time Offset" was previously used on a Workstation or Location it must be reconfigured using the "Regional Time Zone Setting" in *System Parameters* and under each *Location*.

Loading the Software

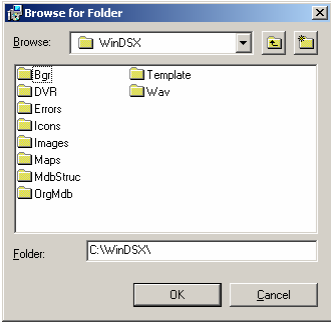
1. Double click on Setup.exe in the Install### folder of the WinDSX Distribution CD. On the WinDSX Setup Wizard click on **Next**.



2. Select the Installation Folder. For new installations use the default. For upgrades to existing systems change to the folder where the software was previously installed. Click on **Browse** to change the destination. Click on **Next** to continue once the destination folder is correct.

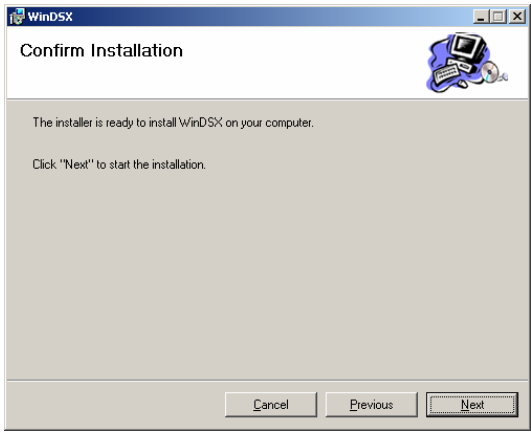


2a) Browse to the location the software was previously installed and click on **OK**.

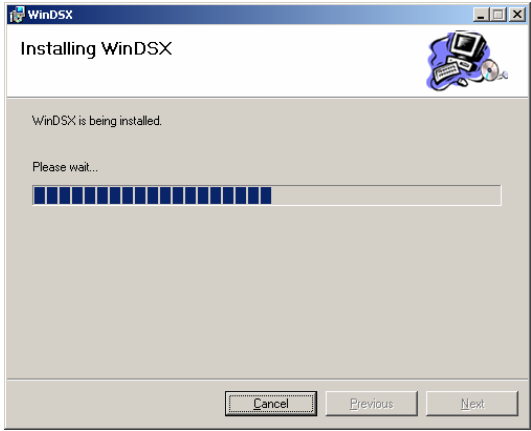


2b) Once the correct destination folder has been selected click on **Next**.

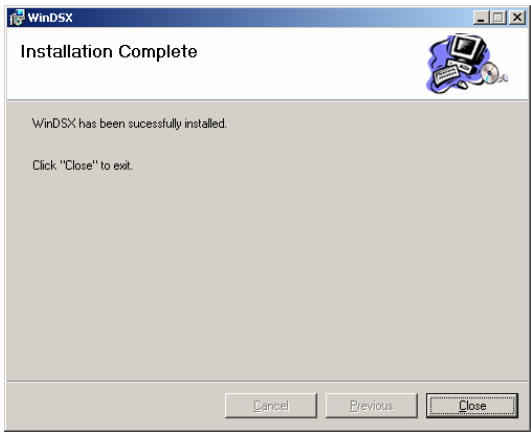
3. At the Confirm Installation screen click on **Next**.



4. During the installation process the progress screen is displayed.



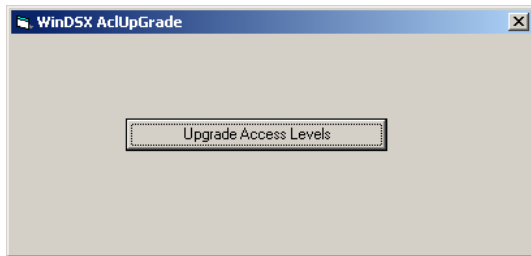
5. When the process is finished the Installation Complete screen is displayed. Click on **Close**.



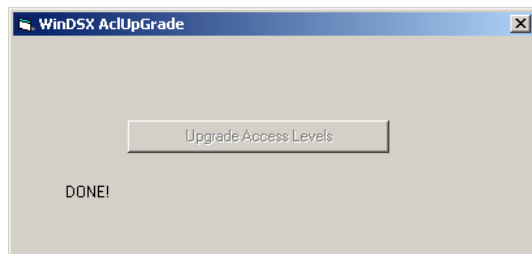
- Using explorer navigate to the WinDSX folder where you just installed the software. Locate the DB.exe file and double click on it. The first time the program is run the following message will be displayed. This is instructing you to set the Regional Time Zone settings under “Location” and under “System Parameters” for any panel location or Workstation that is not in the same Time Zone as the Comm Server PC. Click on **OK**.



- The first time DB.exe is started after upgrading from 3.1 and lower at the Comm Server PC the following screen will appear. Click on the “**Upgrade Access Levels**” button in the middle of the screen so the program will convert the access levels from the old database and make them ready for the new Global Access Level Manager.



- When the Access Level upgrade process is complete the Screen will show **Done!** Click on the **X** in the top right corner.



- Repeat this process as many times as necessary to upgrade all PCs that run WinDSX. Upgrade the File Server first followed by the Comm Server and then all other Workstations. The Access Level Upgrade is only performed the first time.

Note !!! You must be logged into Windows® as the Administrator of that computer.

Shut Down and Re-Start Procedure

Shut Down

- Exit the WinDSX DataBase (DB.exe) and/or Workstation (WS.exe) programs running on all Workstations that operate the WinDSX software.
- Exit the WinDSX DataBase (DB.exe) and/or Workstation (WS.exe) programs running on the Comm Server PC.
- Shut down the Windows operating system on all Workstations. Use the Start button to access the shut down menu. Once you receive the message “It is now safe to turn off your computer”, you may then power down the PC.
- Repeat step 3 for the Comm Server and then optionally for the File Server.

Start Up

- The File Server, if powered down, is the first to be powered up.
- Once the File Server is completely up and running, power up the Comm Server PC.
- Start the WinDSX programs on the Comm Server first.
- Start the WinDSX programs on the Workstations that run WinDSX.

WinDSX Login

The default user name is **master** and the password is **master** both entered in lower case.

WinDSX System Changes

TCP/IP Communication Changes to Master Controllers

WinDSX Version 2.1 and up is now using TCP/IP Datagrams instead of Sessions. If you are not using TCP/IP communications to controllers this change does not affect your installation. If you are utilizing TCP/IP for Master controller communications with the use of a Lantronix serial server or “KB2CW” running on a PC there are several changes to be made.

Upgrading to Version 3 and higher with FlashBus Video Card

If you are upgrading to Version 3 or higher and you are using a FlashBus video capture card in your Photo ID Badging Station follow these steps after the upgrade. In the WinDSX Database program navigate

to System/Setup/Image Source. Double click on the name of the Live Video Source.

Select the Commands Tab of the video source. Scroll to the bottom of the screen and click on the "Default Commands" button, then click on "OK". Close and restart the program.

Running History reports for Individuals

After upgrading from Version 2 to Version 3 running History reports for specific cardholders requires the use of the First and Last Name Sounds Like Fields for History that was accrued before the upgrade. For all history that accrues after the upgrade the cardholder searches can be performed as they were before.

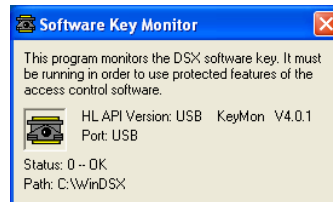
USB Software Key

The USB Software Key is used to copy protect and enable the Live (DSX) Image and Signature Capture, and DVR integration. The KeyMon.exe program and the USB Key need only to be installed on a single PC in the System for the software or enabled features to be functional on all PCs running WinDSX.

1. Select which PC will have the USB Key installed and will run the Software Key Monitor program. Consider that the program must be running at all times and the USB Key must be installed and recognized at all times for the protected software and features to operate properly and fully. The old Image Key used in older badging systems must now be replaced with the USB Software Key and the Software Key Monitoring program. There can only be one USB Software Key in a system. The Key can be modified in the field to incorporate new features.
2. Plug the DSX USB Software Key into a free USB port on the Computer of choice.
3. Locate the HDD32.exe in the WinDSX Folder on the PC where the USB Key is connected. Double click on the HDD32.exe to begin the install. Click Next, then Finish on the Wizard pop up screens. The system will return a message indicating the installation was successful.
4. From the WinDSX folder on the same PC that the USB Key is installed and where the HDD32.exe was just loaded find the KeyMon.exe and run it. Once the Software Key Monitor program finds the USB Software Key, the KeyMon program will display a screen like the one shown below on this

page. To Close KeyMon click once on the small X in the top right corner of the status screen.

5. The KeyMon program must be started each time Windows NT/2000/XP™ is started and before running the WinDSX program. Double clicking on the executable from Windows Explorer can start the Key Monitor Program - KeyMon.exe. The KeyMon.exe can also have a shortcut created so that it is launched from the Windows Desktop before the WinDSX program is started. KeyMon can also be placed in the Windows "Startup" if desired.



Changes to Alarm Echo

The Comm Server PC at the customer site typically has at least one modem comm port with a DSX dial-up modem. This modem and comm port are not defined in WinDSX. This modem is for Alarm Echo only and is configured in the ae_settings.txt file located in the \WinDSX\RunData folder of the Comm Server. Find the \WinDSX\RunData folder and locate the ae_settings.txt file. In the file locate the section on Echo Comm Port and set the Value to the Comm Port Number that the Alarm Echo modem is attached to.

Time Zone Linking

Linking to a Time Zone can force it to a pre-selected state of on or off as selected in the time zone definition. Anything this Time Zone is assigned to is subsequently affected. This could be used to control Access Levels, Alarm Echo, Devices, Event Filters, Image Recall, Inputs, Outputs, and Linking Groups. Including a Time Zone in a Linking Group requires WinDSX Version 3.7 and higher with controller firmware of 3136 and higher. Do Not program a link to a Time Zone unless **all** field controllers have firmware version 3136 or higher! If you do you will have to delete the Linking Group from the database.

Note /// For More Information

For the full Software Installation Manual see the Docs folder on the WinDSX software distribution CD.